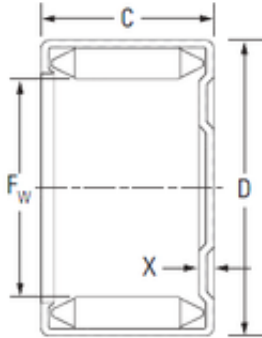




AMERICAN Timken BEARING MFG.CORP.

KOYO M24141 needle roller bearings



Bearing No. M24141

Size	38.100x47.625x22.220 mm
Bore Diameter	38.100 mm
Outer Diameter	47.625 mm
Width	22.220 mm
Fw	38.100 mm
D	47.625 mm
C	22.220 mm
x	3.05 mm
b	18.7 mm
Weight	0,091 Kg
Basic dynamic load rating (C)	36.5 kN
Basic static load rating (C0)	81.5 kN

M24141 Bearing 2D drawings and 3D CAD models